

Growth of the Human Milk Composition Initiative in the US and Canadian Governments

A. Vargas¹, K. Gibbs¹, D. Anderson-Villaluz², J. Ahuja³, S. Chakrabarti⁴, K. Hopperton⁴, M. Stanton⁴, P. Pehrsson³, S. Parnel⁴, K. Casavale⁵



¹ Eunice Kennedy Shriver National Institute of Child Health and Human Development, National Institutes of Health, HHS
² Office of Disease Prevention and Health Promotion, Office of the Assistant Secretary for Health, HHS
³ Methods and Application of Food Composition Laboratory, Beltsville Human Nutrition Research Center, Agricultural Research Service, USDA
⁴ Bureau of Nutritional Sciences, Food Directorate, Health Canada
⁵ Office of Nutrition and Food Labeling, Center for Food Safety and Applied Nutrition, Food and Drug Administration, HHS



INTRODUCTION TO THE HUMAN MILK COMPOSITION INITIATIVE (HMCI)

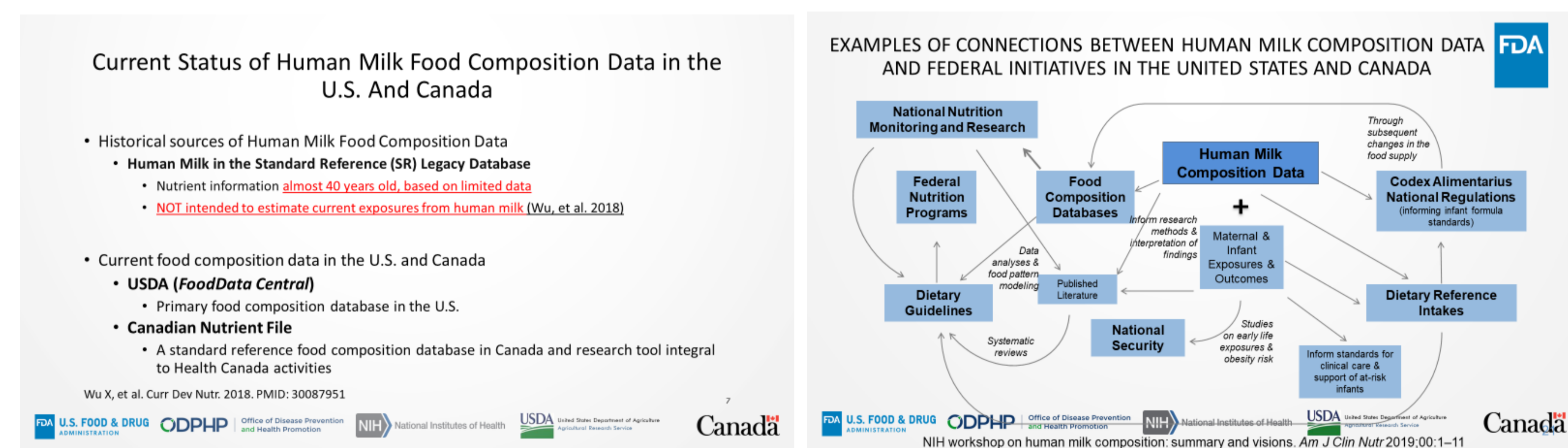
Introduction: Nutrition programming and policies for infants are dependent on human milk composition and consumption data, yet current and nationally relevant human milk composition data in the U.S. and Canada are lacking. This public health need for human milk composition data has been identified through multiple peer-reviewed systematic reviews, as well as the 2020 Dietary Guidelines Advisory Committee Scientific Report, and has also been recognized by various federal and non-federal stakeholders. This need continues to drive the activities of the HMCI.

Goal: Support coordination of the development of human milk composition data in the U.S. and Canada for use by federal policy, program, and other stakeholders.

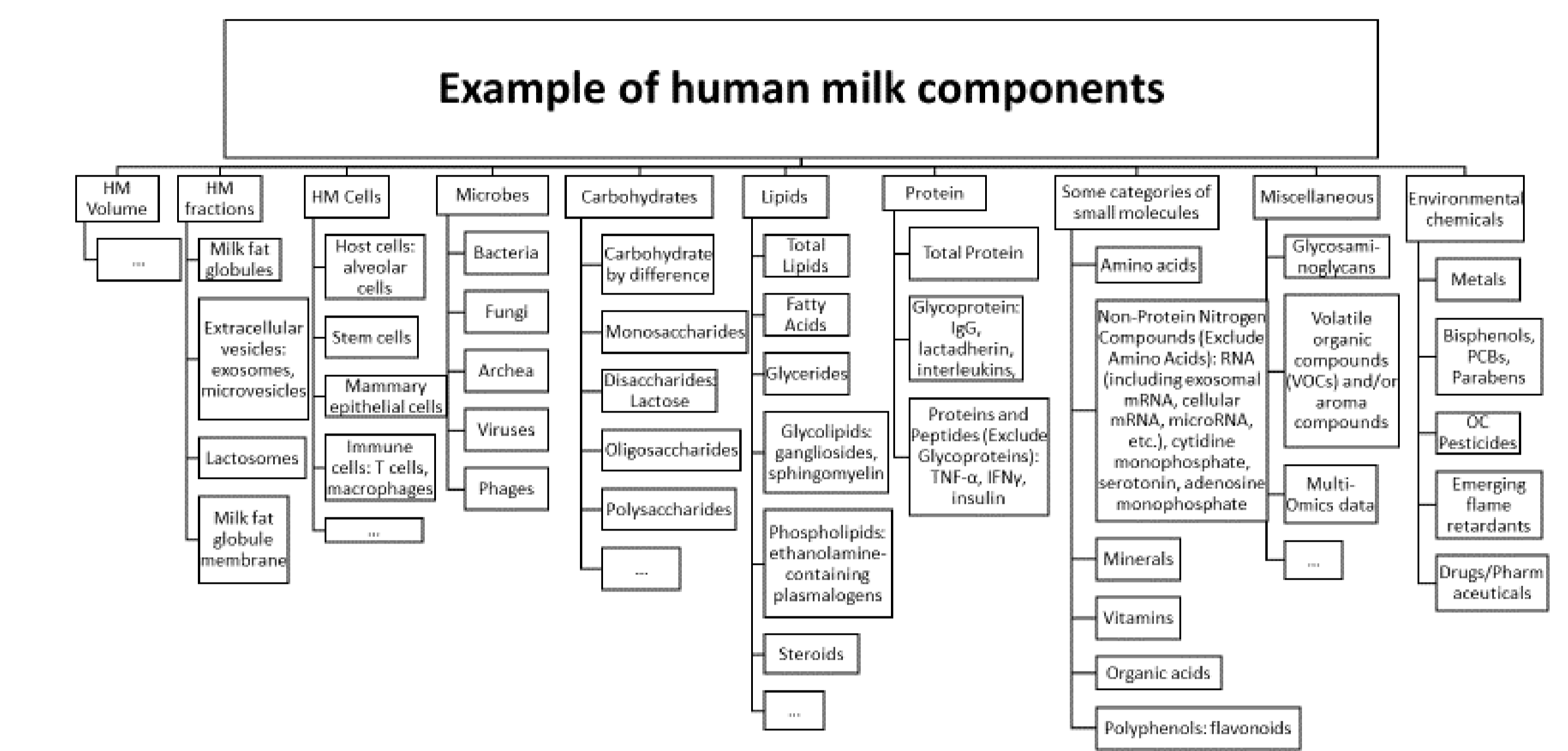
Organization: HMCI is co-coordinated by the U.S. National Institutes of Health and Health Canada, and leadership includes the U.S. Food and Drug Administration, the U.S. Office of Disease Prevention and Health Promotion, the U.S. Department of Agriculture, and Health Canada (Food Directorate and the Office of Nutrition Policy and Promotion). Additionally, the HMCI is supported by and supports communication with and among a diverse volunteer expert groups across both countries.

Disclosure: HMCI is not a funded research program or funding body.

CURRENT STATUS OF HUMAN MILK COMPOSITION DATA AND ITS USE IN FEDERAL PUBLIC HEALTH PROGRAMS



CONCLUSIONS



ABSTRACT

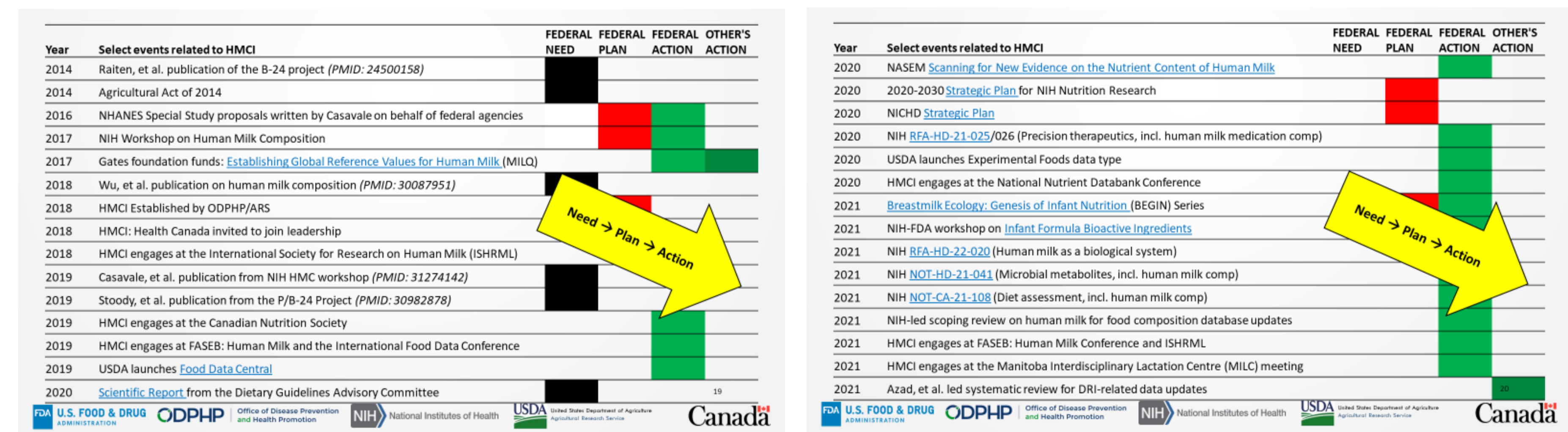
Objective: To describe new work performed by the HMCI.

Background: Human milk (HM) is a complex biological fluid important for infant nutrition. Currently, neither the United States nor Canada collects HM samples in national population health and nutrition surveys. Additionally, data on HM are scarce and outdated in the national food composition databases in both countries. The Human Milk Composition Initiative (HMCI) is a joint United States (U.S.) - Canada federal undertaking to articulate how data related to human milk composition (HMC) are relevant to federal programs, policies, and regulations that positively impact public health. The HMCI views national nutrition and health monitoring by the federal governments in both countries as essential to support the health of infants and young children. Including HM data into monitoring efforts could capture nutritional, environmental, immunological, and other biological factors important to infant, child, maternal, and population health.

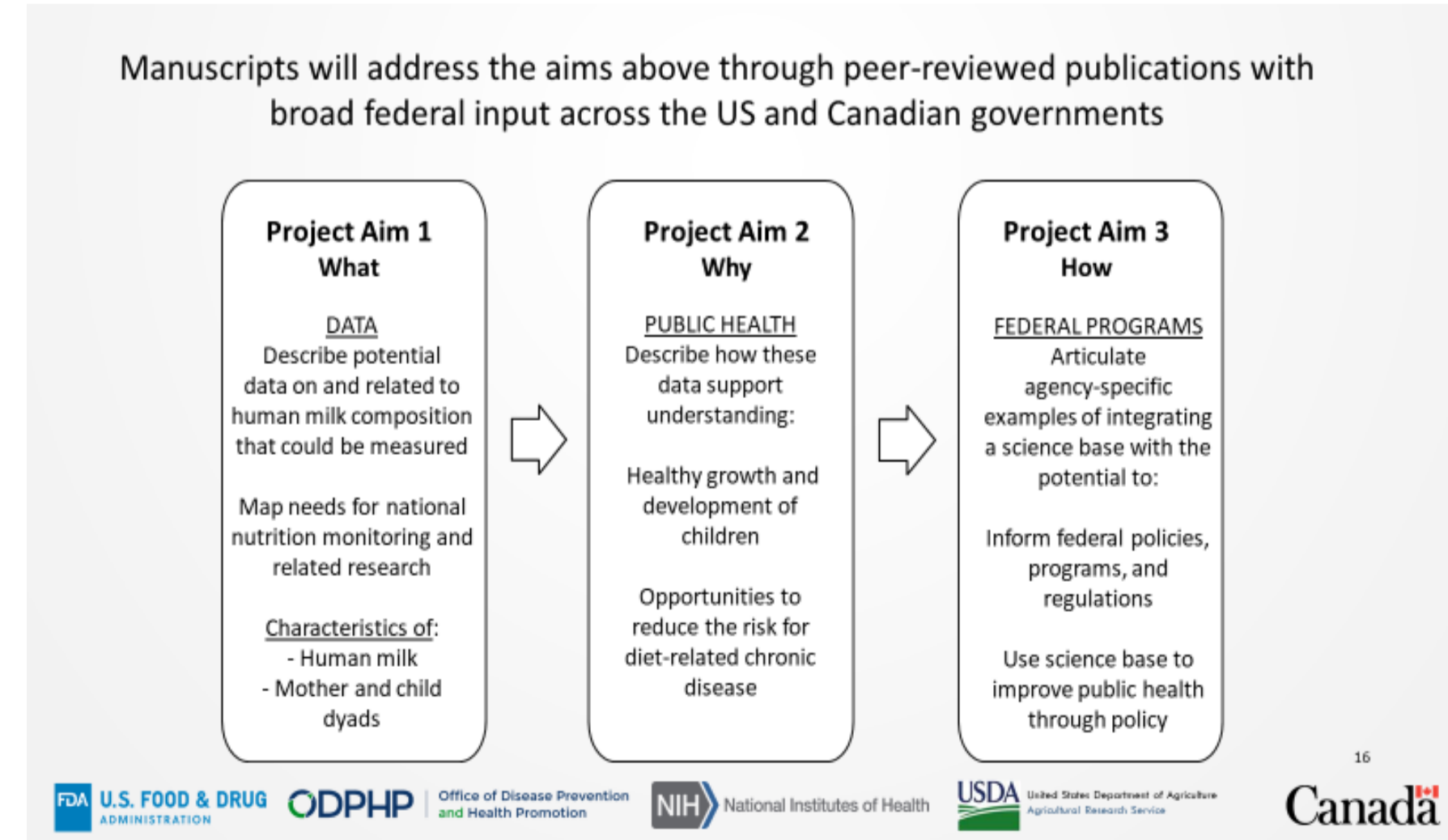
Description: Over about the past decade, the federal governments of the U.S. and Canada have progressed from publicly stating a federal need for HMC data to taking specific federal action to fulfill data needs. HMCI has played key roles, where needed, by bringing together diverse scientific perspectives as well as communicating and coordinating between federal agencies, academic researchers, and other public health professionals. HMCI is currently developing a manuscript series with broad federal input in the U.S. and Canada and a scoping review aimed at generating an interim HM Nutrition Profile (iHMNut) that could describe what current HM nutrient profiles look like in the U.S. and Canada which could be used in food composition databases.

Conclusion: While the immediate objective for HMCI is to support the development of an updated interim HMC reference for use by public health professionals and researchers, HMCI continues to envision a more comprehensive surveillance-based program to provide a full picture of HMC in the United States and Canada.

TIMELINE OF KEY EVENTS RELEVANT TO IMPROVING HUMAN MILK COMPOSITION DATA



HMCI MANUSCRIPTS



A DRAFT PLAN FOR AN INTERIM HUMAN MILK NUTRITION PROFILE



How is HMCI moving towards the end goal?

- Scoping review** to determine which nutrients have adequate evidence from a systematic review to inform a potential interim human milk profile for the food composition databases
- Within/across agency advocacy, support and action** on HMCI topics
 - ex. NICHD signing on to other NIH funding efforts, PRIMORDIAL, etc.
- Coordination and communication** among stakeholders
 - Interagency presentations and academic conferences
 - Manuscript series (1 submitted for publication, 2 additional in development)



We are witnessing a groundswell of interest in human milk composition research and appreciation of its value in public health

We welcome new members to join our Volunteer Expert Interest Group. For more information contact: kimberlea.gibbs@nih.gov or ashley.vargas@nih.gov

